



MD-S910 INTELLIGENT PRESSURE SWITCH

TECHNICAL CHARACTERISTIC:

- ✓ 4 digit LED to show pressure in real time
- ✓ Three pressure units available:Mpa Kgf Psi
- ✓ Relay signal output, upper and lower limit adjustable
- ✓ Delay control, reverse control, pressure leakage protection, passwords .



MD-S910 is a intelligent digital pressure controller setting pressure measurement, pressure display, control in one professional unit. It has followed features: easy operation, good shock resistance, high precision, control range adjustable, long-term stability.

MD-S910 has the followed functions: delay control, reverse control, three pressure units to change, one key to error clearing. It is widely used in water supply of building, air compressor, automatic machinery.

The shell uses engineering plastic. The pressure connector is stainless steel. The product uses ceramic sensor chip to keep it good quality.

APPLICATION:

- ◇ Pump control
- ◇ Air compressor
- ◇ Automatic machinery

SPECIFICATION:

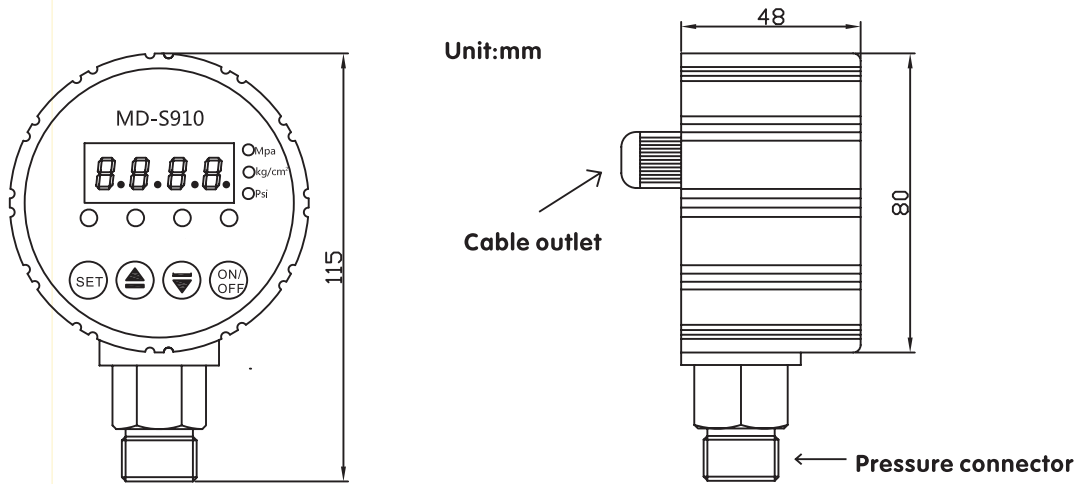
Range	0~6...10...16Bar (0~0.6...1.0...1.6Mpa)
Overload Capacity	150% ;
Bounds Set	Any point can be set within the range.
Alarm Method	Relay signal (Upper limit break, low limit contact)
Acc.	± 0.5%FS
Long-term Stability	Typical: ± 0.5%FS/year
Load Capacity	220VAC 5A
Supply	124VDC 220VAC 380VAC(Selectable)
Operating Temperature	-20 ~ 80°C
Compensation Temperature	-10 ~ 60°C
Electrical Protection	Short-circuit protection, reverse protection, anti-electromagnetic interference
Sampling Frequency	5 times/sec
Measurement Medium	Liquid, gas compatible with 316SS
Connector	M20*1.5、G1/2、G1/4
Connector Material	304SS
Sensor	316L SS
Shell	Engineering plastic
Outline Line	Power: red blue Output: black white(passive signal)



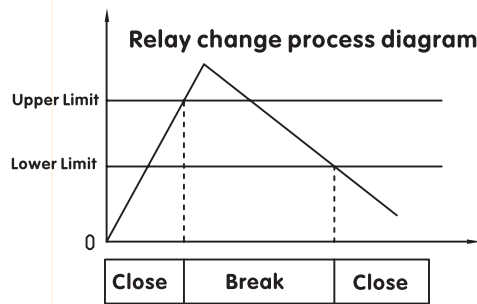
上海铭控传感技术有限公司

Mingkong Sensor Technology(Shanghai) Co.,Ltd
TEL:021-5778 0480 FAX:021-51564102

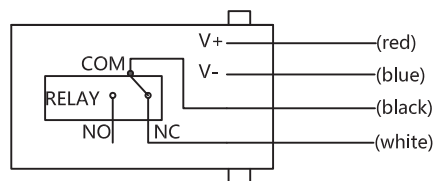
SIZE:



ELECTRICAL SPECIFICATION:



Outlet Line



*Reverse control is available
(Low pressure to start, high pressure to stop)

SELECT GUIDE:

MD— S910 — 16b — 1 — J — P2 — M1 — B — T1 — L

Range:

- X M(0-XMpa)
- X b(0-X bar)
- X P(0-X PSI)

Acc. :

1 (0.5% FS)

Output:

J (Relay Output)

Supply:

- P2(24VDC) P6(12VDC)
- P4(220VAC) P5(380VAC)

Addition:

L Display

Medium Temperature:

T1 (-20~+80°C)

Electric Connecting:

B (Fixed cable)

Screw Connector:

- M1 (M20*1.5) M2 (G1/4)
- M3 (G1/2) M4(1/2NPT)
- M5(1/4NPT) M7(Customized)