



## MD-S900E DIGITAL PRESSURE SWITCH

### TECHNICAL CHARACTERISTIC:

- ✓ 100mm stainless steel dial, 4 digit LED
- ✓ Three pressure units available: Mpa Kgf Psi
- ✓ Radial mounting and axial mounting are available.
- ✓ Delay control, reverse control, pressure leakage protection, password



MD-S900E is a intelligent digital pressure controller setting pressure measurement, pressure display, control in one professional unit. It has followed features: easy operation, good shock resistance, high precision, control range adjustable, long-term stability.

MD-S900E has the followed functions: delay control, reverse control, three pressure units to change, one key to error clearing. It is widely used in water supply of building, air compressor, automatic machinery.

The shell uses 100mm stainless steel. The pressure connector is stainless steel. Radial and axial mounting are available. The product uses imported sensor to keep it good quality.

### APPLICATION:

- ◇ Pump control
- ◇ Air compressor
- ◇ Automatic machinery

### SPECIFICATION:

Range	0-0.2...0.6...1.0...1.6...5...10...25...40...60Mpa
Overload Capacity	150% ;
Bounds Set	Any point can be set within the range.
Alarm Method	Relay signal
Acc.	± 0.5%FS
Long-term Stability	Typical: ± 0.5%FS/year
Load Capacity	220VAC 5A
Supply	24VDC 220VAC 380VAC(Selectable)
Operating Temperature	-20 ~ 80°C
Compensation Temperature	-10 ~ 60°C
Electric Protection	Short-circuit protection, reverse protection, anti-electromagnetic interference
Sampling Frequency	5times/sec
Measurement Medium	Liquid, gas compatible with 316SS
Connector	M20*1.5、G1/2、G1/4
Connector Material	304SS
Sensor	316LSS
Shell	Stainless Steel
Outlet Line	Power: red blue Output: black white(passive signal)

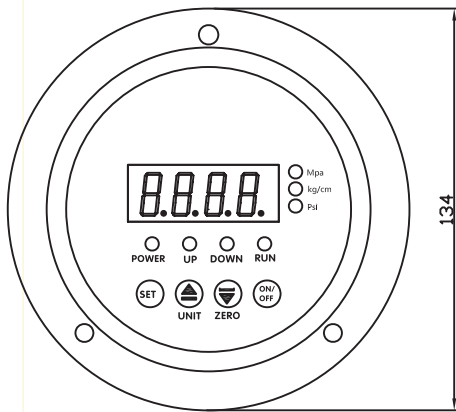
» PRESSURE SWITCH

上海铭控传感技术有限公司

Mingkong Sensor Technology(Shanghai) Co.,Ltd  
TEL:021-5778 0480 FAX:021-51564102

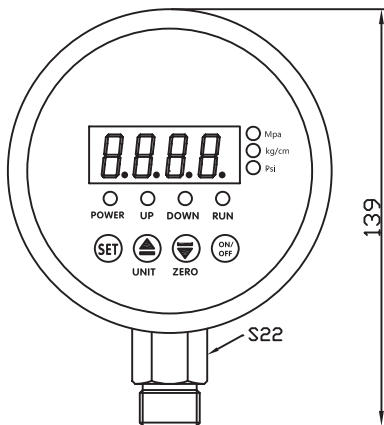
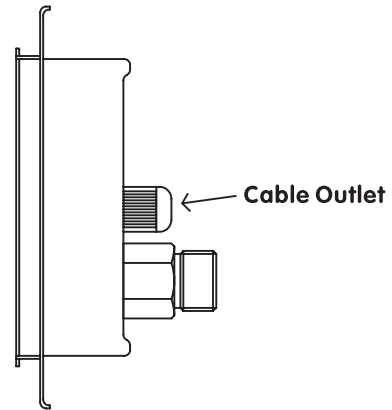


SIZE:

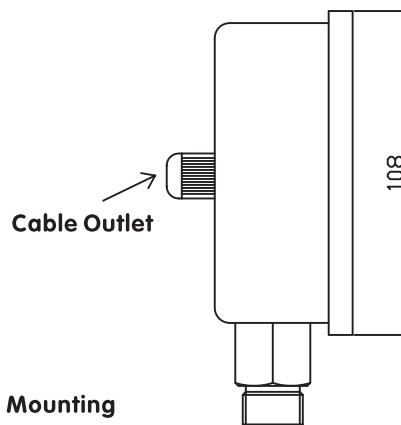


Unit:mm

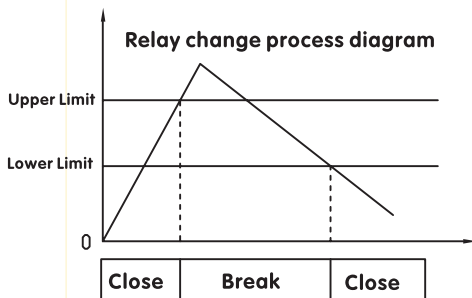
Axial Mounting



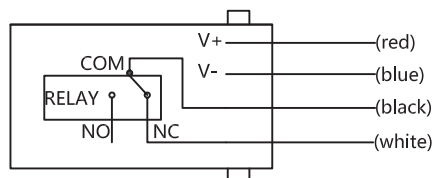
Radial Mounting



ELECTRICAL SPECIFICATION:



Outlet Line:



\*Reverse control is available  
(Low pressure to start, high pressure to stop)